

# QUANTUM ELSS TAX SAVER FUND (QTSF)

An Open Ended Equity Linked Saving Scheme with a Statutory Lock in of 3 years and Tax Benefit



Optimize tax saving under Section 80C.



Uses a bottoms-up stock selection process to minimize risk.



Has a low portfolio turnover.



Holds cash when stocks are overvalued - no derivatives and no hedging.



Follows a disciplined research and investment process.

## ★ Quantum ELSS Tax Saver Fund

Is there a fund that can help you build wealth over the long term and help you save tax, simultaneously? Yes, there is!

The Quantum ELSS Tax Saver Fund (QETSF) invests in equities and also allows you to save tax u/s 80 C of the Income Tax Act. Please note that your investments in this fund (like all ELSS funds) are subject to a lock-in period of 3 years.

## 📄 Fund Information

Category of Scheme: Equity Linked Saving Scheme (ELSS)

Tier I Benchmark  
Tier II Benchmark

BSE 500 TRI  
BSE 200 TRI

Current Expense Ratio  
as on March 31, 2025

Direct Plan: 0.89%  
Regular Plan: 1.99%

Minimum  
Investment  
amount

₹500

## 👤 Fund Manager

Work experience:  
**11 Years**

Work experience:  
**10 Years**

Work experience:  
**13 Years**

**Mr. George Thomas** is the Associate Fund Manager managing the scheme since **April 1, 2022**.

**Mr. Christy Mathai** is the Fund Manager managing the scheme since **November 23, 2022**.

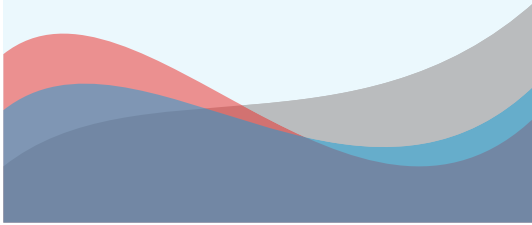
**Mr. Ketan Gujarathi** is the Associate Fund Manager managing the scheme since **February 01, 2025**.

## Key Statistics

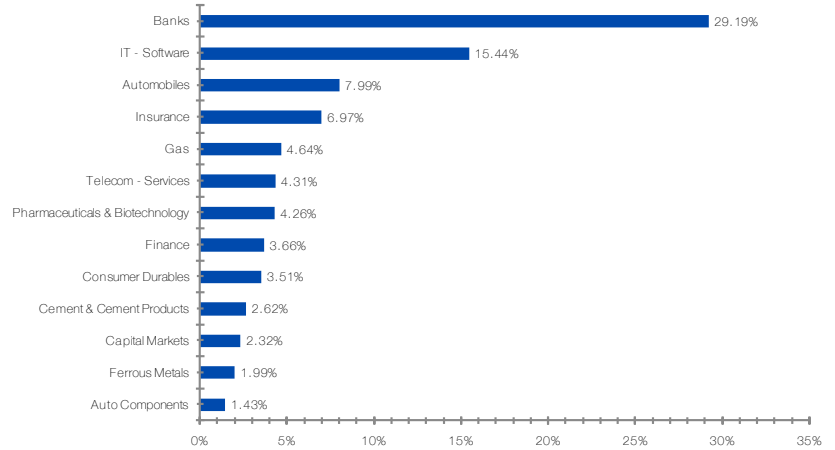
Standard Deviation **12.51%**

Beta **0.79**

Sharpe Ratio **0.78**



## Industry Allocation as on March 31, 2025



## Portfolio as on March 31, 2025

Name of Instrument	% to NAV
1. HDFC Bank Ltd	8.82%
2. ICICI Bank Ltd	7.87%
3. Infosys Ltd	4.80%
4. Bharti Airtel Ltd	4.31%
5. Tata Consultancy Services Ltd	4.24%
6. Kotak Mahindra Bank Ltd	4.06%
7. State Bank of India	4.04%
8. Wipro Ltd	3.60%
9. Crompton Greaves Consumer Electricals Ltd	3.51%
10. Cipla Ltd	3.01%

**Note:**

Risk Free Rate assumed to be 7.20% (FBIL Overnight MIBOR for 31st March 2025) for calculating Sharpe Ratio. Standard Deviation, Sharpe Ratio & Beta are calculated on Annualised basis using 3 years history of monthly returns.

## Product Labeling

Name of the Scheme & Benchmarks	This product is suitable for investors who are seeking*	Risk-o-meter of Scheme	Risk-o-meter of Tier I Benchmark	Risk-o-meter of Tier II Benchmark
<p>Quantum ELSS Tax Saver Fund</p> <p>(An Open Ended Equity Linked Saving Scheme with a Statutory Lock in of 3 years and Tax Benefit)</p> <p>Tier I Benchmark: BSE 500 TRI</p> <p>Tier II Benchmark: BSE 200 TRI</p>	<ul style="list-style-type: none"> <li>Long term capital appreciation</li> <li>Invests primarily in equity and equity related securities of companies in BSE 200 index and to save tax u/s 80 C of the Income Tax Act. Investments in this product are subject to lock in period of 3 years.</li> </ul>	<p>The risk of the scheme is Very High Risk</p>	<p>The risk of the benchmark is Very High Risk</p>	<p>The risk of the benchmark is Very High Risk</p>

\*Investors should consult their financial advisers if in doubt about whether the product is suitable for them.

[/QuantumMutualFund](#)
[/@quantum\\_mutual\\_fund](#)
[/Quantum\\_MF](#)
[/quantum-mutual-fund](#)
[/quantummualfund](#)



Website : [www.QuantumAMC.com](http://www.QuantumAMC.com)

Email : [CustomerCare@QuantumAMC.com](mailto:CustomerCare@QuantumAMC.com)

For Partner related queries : [PartnerCare@QuantumAMC.com](mailto:PartnerCare@QuantumAMC.com)

SMS : <QUANTUM> to 9243-22-3863

Toll Free Helpline : 1800-22-3863 / 1800-209-3863

SMS : <PartnerCare> to 9243-22-3863

**Mutual Fund investments are subject to market risks, read all scheme related documents carefully.**